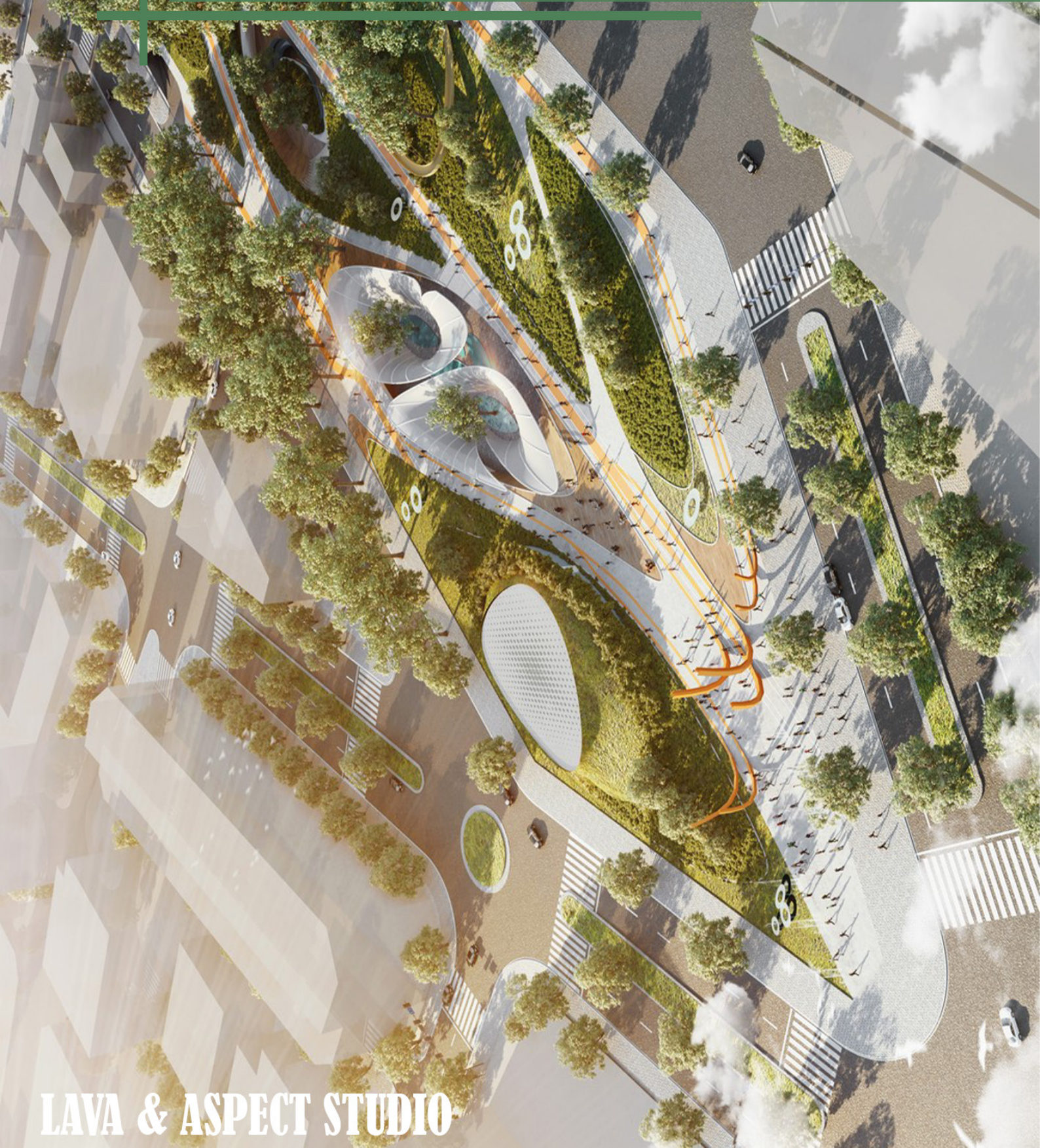


future Central Park Ho Chi Minh City



LAVA & ASPECT STUDIO

THE PLAN

We head to a modern park that combines technology and environment, integrating many functions to serve the people.

This 16-hectare land is located in the “heart” of District 1, acting as an important connection point between Ben Thanh Market, Bui Vien Western Quarter and especially the Ben Thanh underground Metro station that is about to come into operation.

The architects drew inspiration from the imagery of old railway tracks. Soft, winding elevated walkways intertwine like the railway network of yesteryear, not only defining traffic flow but also serving as a visual reminder of the site’s transport history.

These walkways, which end as twisting steel sculptures, also connect to an underground shopping area and Ben Thanh Metro Station.

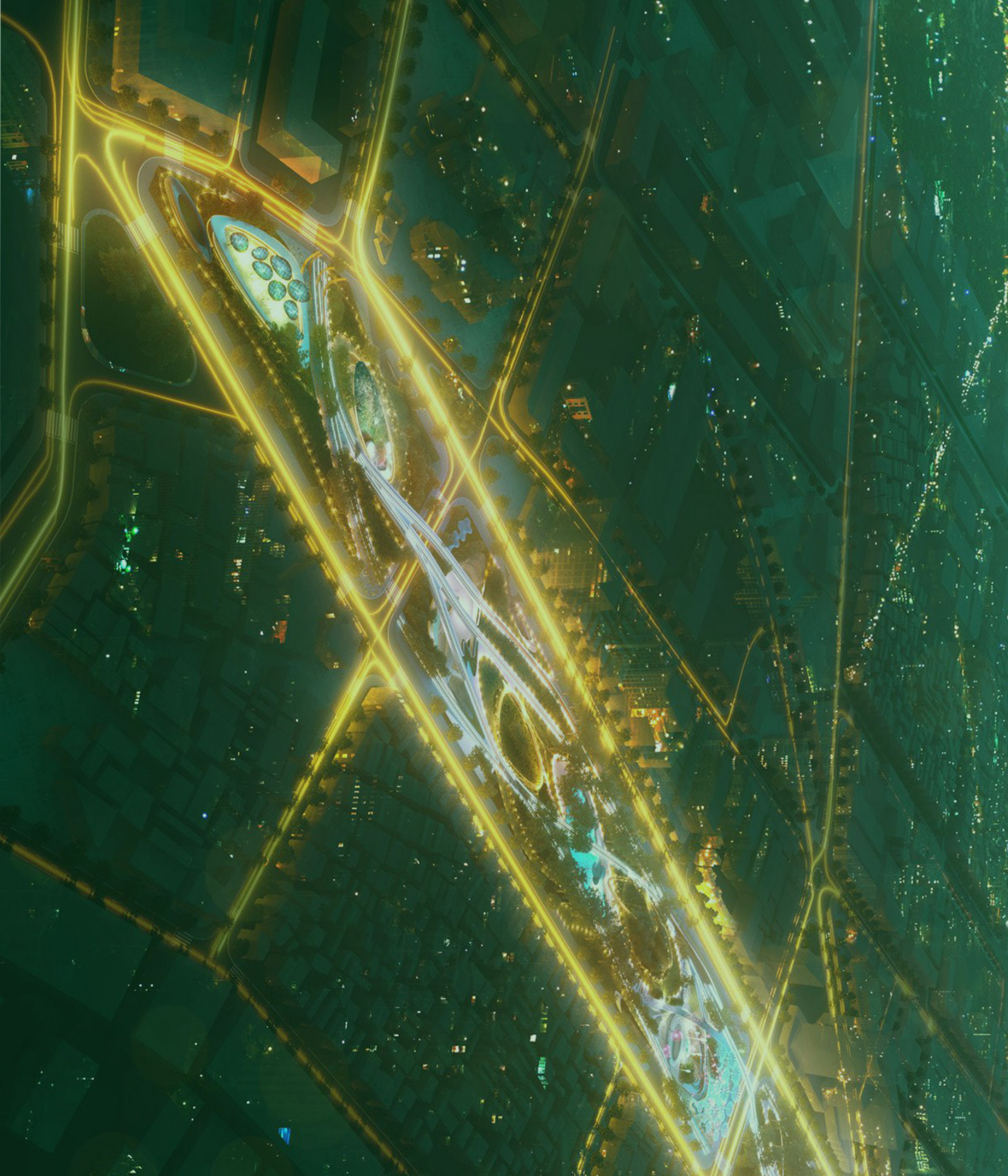


TECHNOLOGY AND



The masterplan will be complete with three different types of artificial tree that will provide shelter, water and energy for the city. The Water Purification trees will be designed to collect rainwater for recycling and reuse for watering plants, drinking fountains and fire hydrants.

Meanwhile, the Ventilation trees will reduce heat and create fresh air, and the Solar trees will have solar panels to create energy as well as info screens, charging docks and WIFI routers.



COMING SOON